

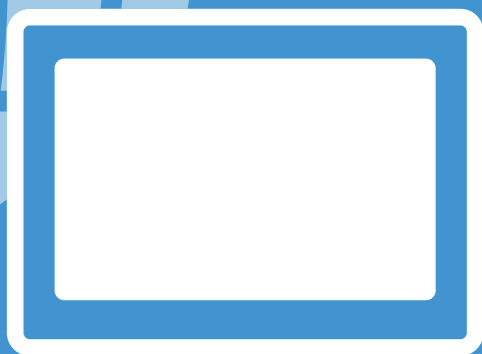


Professionals in Human Machine Interface

TEL: +886-2-22286770

FAX: +886-2-22286771

9F., 910 Zhongzheng Rd., Zhonghe Dist., New Taipei City 23586, Taiwan



Rear-Mount HMI MT8070iER
is perfectly flush with control plate at front



Conventionally, Human Machine Interface (HMI) units are installed by means of Panel-Mount, which is insert the unit into a cutout in a control cabinet from the front, and then secure the unit by attaching mounting brackets from the rear. In this way, the front bezel of the unit remains visible from the front, and the advantage is that installation, maintenance, and eventually replacement are easy. As the cutouts are gradually being standardized, brand factor becomes of little significance in selecting replacement HMI. For example, The 192 x 138mm cutout that Weintek adopted for 5.7" HMI in 1995 is still in use among popular 7" HMI nowadays, including Weintek's models : MT8070iH, MT8070iE, and eMT3070A. The 192 x 138mm cutout has become the de-facto standard cutout dimension for 7" HMI, as most leading HMI manufacturers are releasing new products conforming to this standard.

As HMI finds applications in increasingly diverse fields in addition to serving as a control panel of an industrial machine, Panel-Mount is no longer the only mounting solution.

Some applications, such as HMI for medical equipment, food machinery, or sport equipment, require that HMI be embedded in the machine in order to realize all-flat design. In this case, the conventional Panel Mount method will not be the solution.



Weintek design concept is not only to fulfill the current needs of the customers, but also to foresee the future and always preparing ahead. To achieve this, Weintek continuously invest heavily in research and development and devote to innovation. In response to the diversity of applications for HMI, Weintek is releasing the new Human Machine Interface – MT8070iER Rear-Mount model. For Rear-Mount, in addition to the cutout of the control cabinet, four studs must be attached at the back. The MT8070iER can then be secured to the control cabinet from the rear by using the mounting brackets included in the package. Since the wall thickness may differ from one to another, ranging from 1.5mm to 3.5mm, the mounting brackets we designed are slotted with different heights within this range, in order to keep the touchscreen flush with the surface of the control cabinet. Customers can freely design the overlay style and affix the overlay to the cabinet surface. Since a viewing area reserved for LCD screen is needed, and that the operator will touch the screen to control, the recom-

recommended hardness of the overlay is 2H or greater. Alternatively, you can use protect film from Weintek to cover the overlay. The MT8070iER is identical to the MT8070iE except installation method.

■ Installation Steps:

1 	<p>Around the cutout on the control cabinet, draw the reference lines for positioning the overlay.</p>	2 	<p>Select the mounting holes according to the wall thickness of control cabinet and secure the mounting brackets onto both sides of the HMI unit.</p>
3 	<p>Secure the HMI to the cabinet by four studs.</p>	4 	<p>Affix the overlay to the cabinet front surface.</p>

■ MT8070iER Features :

• Highly Flexible Customized Exterior Design

The open frame MT8070iER offers customers more flexibility to customize the control cabinet and overlay, and seamlessly integrates HMI with the equipment.

• Easy Installation in Embedded Application

The MT8070iER plastic enclosure is only 34mm thick and can be secured with the mounting bracket at either side. The mounting holes are slotted to fit different wall thicknesses(1.5mm, 2.0mm, 2.5mm, 3.0mm, 3.5mm), which enables easier installation in embedded application and prevents malfunction of touch detection due to angular deviation.

• Dust-proof and Waterproof Flat Cabinet

The MT8070iER can be installed in the control cabinet enclosure from the rear and is flush with the surface of the cabinet at the front. The front can be completely covered with customized overlay. This effectively avoids dust collecting and water penetration, thereby protecting the electronic parts inside.

■ More Product Information

[MT8070iER Product Information >>](#)