

# PowerVision PV-8050iE

## GRAPHIC HMI WIDE SCREEN

4.3" TFT 350 cd/m<sup>2</sup> Display

4-Wire Resistive Touch Screen

32Bit RISC Processor 600MHz

Fan-less Cooling System

128MB Built-in Flash memory

128MB RAM Memory

Ethernet 10/100 Base-T

Two RS-232/485

IP66 Front Panel

Siemens MPI 187.5k Support\*

CE & UL 508 Approvals



RS232/485

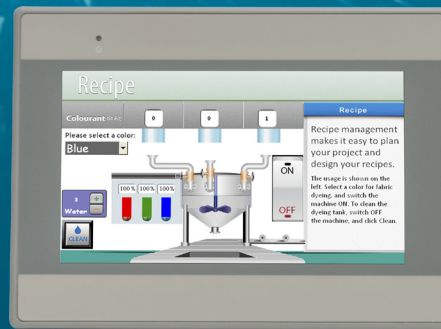


USB 2.0



## The PowerVision PV-8050iE HMI

### 4.3" Wide Screen TFT Display



## PowerVision Series PV-8050iE

The PV-8050iE utilizes an embedded 600 MHz microprocessor to provide crisp performance and startling HMI graphics. An aesthetically designed plastic enclosure offers anti-corrosion and effectively dust and dirt free protection.

The *EasyBuilder Pro* Application Development System allows you to quickly build up to 2000 dynamic graphic screens with Push Buttons, Numeric Display, Alarms, Real-time & Historical Trend objects and support for BMP, JPG, GIF or PNG image import. Enhanced features include a Recipe Management database to check, search and manage recipe information and a Scheduled Management function to execute specified process, time interval or triggered events.

Customize programs with the User-defined Macro Editor, then store frequently used routines in the Macro Library to shorten development time in future projects. Online and Offline Simulation tools facilitate fast application debugging.

Efficiently manage plant with E-mail notification of status alarms and statistical information. Introduce 14 levels of Run-time security for up to 128 Users and with *EasyAccess 2.0* you can communicate with the device from any location.

PowerVision units can support a network of up to 64 devices, exchange data, save data and operate each other over the Internet and support over 150 popular communication drivers.

MODEL	PV-8050iE
<b>CPU</b>	32Bit RISC CPU 600MHz
<b>Memory (standard)</b>	128MB RAM
<b>Storage</b>	Built-in 128MB Flash Memory
<b>Touch Panel</b>	4-wire Resistive
<b>Real Time Clock</b>	Yes
<b>Housing</b>	Plastic
<b>Cooling</b>	Fan-less Design
<b>I/O Port</b>	1 x Ethernet 10/100 Base T (RJ45) 1 x USB 2.0 Com1 (RS-232/RS-485 2W/4W) *MPI support only one port Com3 (RS-232/RS-485 2W) *MPI support only one port
<b>Power input</b>	24VDC
<b>Installation Type</b>	Panel Mount
<b>Display</b>	
<b>Display type</b>	4.3" TFT LCD / LED Backlight
<b>Colours</b>	16 Million
<b>Resolution</b>	480 x 272
<b>Brightness</b>	500 cd/m <sup>2</sup>
<b>Backlight life Time</b>	>30,000 hrs
<b>SIZE AND WEIGHT</b>	
<b>Dimension (W×H×D)</b>	128mm × 102mm × 32mm
<b>Cut-out Size (W×H)</b>	119mm × 93mm
<b>Weight</b>	Approximately 0.25kg
<b>ENVIRONMENT</b>	
<b>Operating Temperature</b>	0°C-50°C
<b>Storage Temperature</b>	-20°C to 60°C
<b>Humidity</b>	10-90% (Non-condensing)
<b>Front Panel Protection</b>	IP65
<b>Certification</b>	CE, UL508 type 4X, AS/NZS CISPR 22:2009+A1:2010

#### NemaVision-iPC Contact Details

**Tel:** +44 (0)1252 370030  
**Email:** sales@nemavision-ipc.com  
**Web:** www.nemavision-ipc.com



DST-PV-8050iE Rev: A